

OUR GARDEN

Seattle Keiro Garden Project

Celebrate Life at the Birthplace of Our Community

Every day at Nikkei Concerns, we ask ourselves, "How do we better serve our community? What can we do?" We pursued a wonderful opportunity to transform an underutilized outdoor space at Seattle Keiro into a garden sanctuary which will significantly enhance the quality of life of our community members. But it is more than just a garden. It is a tribute to the *Issei*, to honor their legacy.

We realize the historical significance in creating a garden here at Keiro because the *Issei* made America their new home, right here in this neighborhood. A vibrant Japanese community thrived here. We lived here. We dreamed here. We worked, gardened, and built a life and a community here. This is our home base. Our garden will be a place to reflect on our heritage. Their legacy will be honored, and we will add our own to celebrate for generations to come.

Our residents will see and feel the power of life every day as the garden blooms around them. After challenging exercises in our gym, the residents who are rehabbing will be able to step outside, feel the fresh air, celebrate their progress, and recharge themselves for their next challenge. Families and friends can come and celebrate their time together here.

Our garden will also be a place to form *kizuna* (bond) with the greater community. We envision residents enjoying conversations with neighborhood children over a cup of tea and people gathering for concerts performed by local artists on warm summer nights. We would like young Japanese who come to America with big dreams, just like the *Issei* did, to come here to learn about our heritage and become connected to our community.

Our garden will link the generations from all over the Puget Sound region and build strong *kizuna* with the greater community.

Our garden sanctuary at Keiro will become a cornerstone of our proud heritage in Seattle that will bond the past to the present and the future.

Over the generations, life happened here, and our family continues to thrive and grow. Life will continue, and our garden will always be a place to celebrate.

This is your opportunity to be part of our collective legacy. Please invest in the present and the future with your heart, mind, and generosity. Help turn a dream into a beautiful, peaceful garden that will improve the quality of life for so many.

Opportunities:

Donate to the Seattle Keiro Garden Project

Join the Friends of the SK Garden

Volunteer to help with future garden events

The Community Speaks Out on the Keiro Garden

The Seattle Keiro Garden is for the community as well the residents, so we asked the community for input. What did we get when 35 community members shared their thoughts and opinions in seven focus groups? We got lots. Boy, did we ever!

Focus Group members shared candid, confirming, creative, stimulating, knowledgeable, heartfelt experiences. They discussed their ideas, opinions and added their thoughts on what is important. They proposed how Nikkei Concerns can learn and incorporate ideas into future plans, specifically with the Garden Project.

Here is a small sample of thoughts and sentiments that focus group members expressed:

- ❁ Nikkei Concerns is "exactly right on, starting with the garden."
- ❁ "It's not about the buildings — it's about the garden. It's your front door."
- ❁ "It isn't a matter of age; it's a matter of need."
- ❁ "If I HAD to be in a place [like Seattle Keiro], I would enjoy a garden. It would be calming. While being in the garden, or looking at it, maybe I'd even forget I'm in nursing home."
- ❁ "Make the garden feel like it's their [the residents'] own backyard."
- ❁ Nikkei Concerns "couldn't do better than Scott Murase."



Seattle Keiro Garden — Progress and Plans

Plans are complete, permits are pending. We grow ever closer to seeing the garden in its full glory. It promises to expand the world of the Seattle Keiro residents and their families. They will be able to hear the birds chirping, watch leaves sprouting, feel the warmth of the sun, and smell the many familiar scents of a garden. Natural beauty will replace abandoned space, and many families will soak in the sun's warmth. The garden will be a place of celebration and discovery where people attend Seattle Keiro, community-based, and personal events. The Seattle Keiro Garden is on its way to becoming a destination for the whole community.

Everything is coming together. After we receive the green light from the city, we will host a public groundbreaking event, and the garden will be on its way! We expect to complete the garden in November.

We launched our plans for the garden at last year's Founders' Golf Benefit and our 35th Anniversary Celebration, with amazing approval and gifts totaling over \$150,000. Our initial estimate of \$500,000 holds steady as we work out actual costs and commitments. We have expanded the project to include a cedar overhang extending from the building façade over the floor-to-ceiling glass doors. Residents and their families will stay dry, even in typical Seattle sprinkles. They can bring the outside in (where it's warm and cozy), gazing at the garden panorama through the glass doors.

We offer you the opportunity to become a permanent part of the garden, on two donor walls. With a donation of \$1,000 or more, you can remember your parents and grandparents, extend your family

legacy by honoring your children and grandchildren, or make your mark with your own name. Businesses and organizations can have a permanent acknowledgement of their unfailing support of our efforts to bring home and heart closer to our residents and foster the creation of a legacy garden in the International District.

We also offer naming rights to significant focal points in the garden, as well as the garden itself. For \$50,000 you may name a major stone piece, a natural sculpture that will inspire tranquility and strength. The dynamic water feature is available for \$150,000, and the entire garden will bear the name of the generous donor who contributes \$250,000.

With 1/3 of our funding in place, our fundraising plans are kicking into gear. We participated in The Seattle Foundation's giveBIG campaign in June, and will feature the Seattle Keiro Garden in the Raise-the-Paddle segment of our upcoming golf tournament in September. We are working on grant applications and are already making personal appeals through the Board and Community Advisory Council. In September, we will reach out to individuals and families through an appeal letter. You are our strength, our key to making the garden our dream come true.

We need your support, and we are confident that the community will rally together, as enthusiastic as the donors at last year's events. You will receive a visit, call, or letter asking for your support of the garden.

The goal of the garden project is to create a year-round space where form meets function, creating an environment that promotes the highest

SEATTLE KEIRO GARDEN DONORS

4/1-6/30/2011

Ayame Kai Guild
Roy Okabe
Suehiro Architecture, James and Gerin Suehiro

In memory of Mitsuyo Amano

Julie Ann OIye
George and Irene Saito

In memory of James and Ayako Demise,

Michihiko Handa, and Mineko Handa
Doug and Joyce Handa

In memory of Fred Imanishi

The Very Rev. Father Rubye-Lew-Huey Pang

In memory of Mitsuko Kimura

Ruby Inouye Shu

In memory of Ruth Luders

Peggy Tanemura
Ry Tanino

In memory of Dwight Matsuda

Louise Kashino Takisaki

In memory of George and Aiko Matsui

Carol Wells

In memory of Robert Nehira

Katsumi and Jane Nehira

In memory of Kete Okazaki

Carol Ideta

In memory of Mary Shimizu

Trudy and Neal Hayashida
Jim and Grace Shibayama

In memory of Tsukiyo Takano

Peggy Tanemura

In memory of George Tanabe

Louise Kashino Takisaki

In memory of Ruth Tokin

Jim and Grace Shibayama

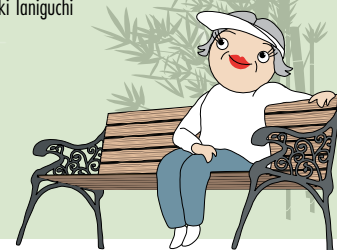
In memory of Tomiko Ueno

Mary Shigaya

Our apologies for omitting the following generous donors!

In memory of Joseph Hattori

Jimmy and Alicia Eng
Ted and Aki Taniguchi



quality of life for our residents, family gatherings and community events. The garden represents renewal and is a starting point for a comprehensive vision, specifically for Seattle Keiro's, but also for Nikkei Concerns', bright future. We will strive to provide programs and services that matter to you, now and for years to come. Thank you for giving so generously to the Seattle Keiro Garden Project!